

## Technical Data Sheet

### iF488 Anti-mouse CD150

**Catalog Number:** 202003, 202004  
**Size:** 25 tests, 100 tests  
**Target Name:** CD150, SLAM, IPO-3  
**Regulatory Status:** RUO

#### Product Details

---

**Clone:** TC15-12F12.2  
**Application:** FC  
**Reactivity:** Mouse  
**Format:** iF488  
**Isotype:** Rat IgG2a  
**Antibody Type:** Monoclonal  
**Formulation:** Phosphate-buffered solution, pH 7.2, containing 0.09% sodium azide and 0.2% (w/v) BSA  
**Protein Concentration:** Supplied at a lot-specific concentration.  
**Storage&Handling:** The antibody solution should be stored undiluted between 2°C and 8°C, and protected from prolonged exposure to light. Do not freeze.  
**Recommended Usage:** For flow cytometric staining, it is recommended to use 5 uL of this reagent per 0.5-1.0 million cells in a 100 µL volume. Optimal reagent performance should be determined by titration for each specific application.  
**Excitation Laser:** Blue Laser (488 nm)

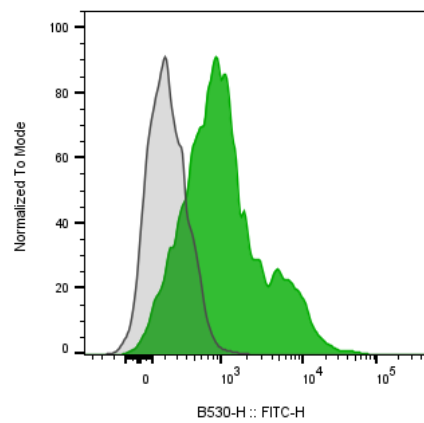
#### Background Information

---

CD150 is a 75–95 kDa type I single-chain transmembrane glycoprotein and a member of the CD2 subset of the immunoglobulin (Ig) superfamily. It functions as a self-ligand, a co-stimulatory receptor for T and B cells, and as a pathogen receptor for measles virus (MV). CD150 also plays roles in hematopoietic stem cell biology and immune regulation.

#### Product Data

---



Mouse splenocytes stained with either IF488 Anti-mouse CD150 clone TC15-12F12.2 (color-filled histogram) or an isotype control (gray histogram).