

## Technical Data Sheet

### FITC Anti-Human CD197

**Catalog Number:** 107311, 107312

**Size:** 25 tests, 100 tests

**Target Name:** CD197, CCR7, BLR2, CDw197, EBI1, CMKBR7

**Regulatory Status:** RUO

#### Product Details

---

**Clone:** 197AM2a

**Application:** FC

**Reactivity:** Human

**Format:** FITC

**Isotype:** Mouse IgG2a

**Antibody Type:** Monoclonal

**Formulation:** Phosphate-buffered solution, pH 7.2, containing 0.09% sodium azide and 0.2% (w/v) BSA

**Protein Concentration:** Supplied at a lot-specific concentration.

**Storage and Handling:** The antibody solution should be stored undiluted between 2°C and 8°C, and protected from prolonged exposure to light. Do not freeze.

**Recommended Usage:** For flow cytometric staining, it is recommended to use 5 µL of this reagent per 0.5-1.0 million cells in a 100 µL volume. Optimal reagent performance should be determined by titration for each specific application.

**Excitation Laser:** Blue Laser (488 nm)

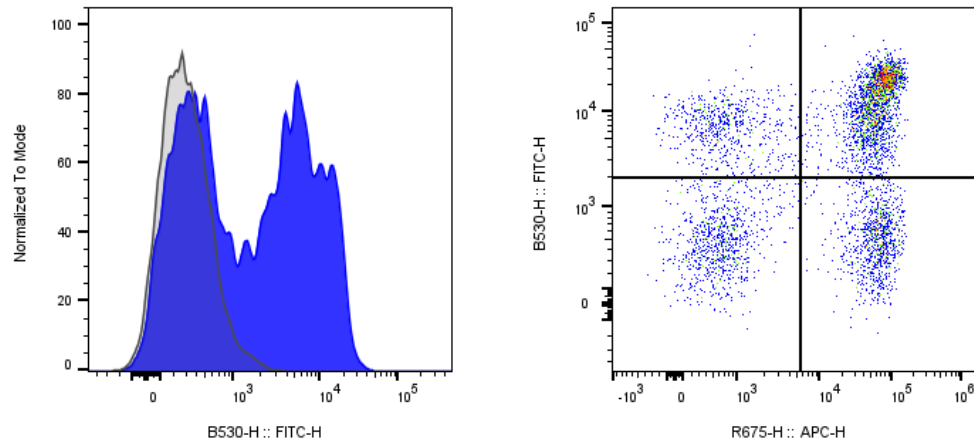
#### Background Information

---

C-C chemokine receptor type 7 is a protein that in humans is encoded by the CCR7 gene. CD197 is a chemokine receptor that binds CCL19 and CCL21. CCR7 is expressed on naive T cells, regulatory T cell, memory T cell, dendritic cell, mature B cell. Through regulating the homing of CD197 expressing cells into secondary lymphoid organs, it affects the interaction among these cells and thus the immune response.

#### Product Data

---



Human peripheral blood lymphocytes stained with CD3 iF647 (APC) and FITC Anti-Human CD197 clone 197AM2a (blue histogram) or an isotype control (gray histogram).