

Technical Data Sheet

PB Mouse IgG2a Isotype Control

Catalog Number: 301515, 301516
Size: 25 ug, 100 ug
Target Name: Mouse IgG2a Isotype Control
Regulatory Status: RUO

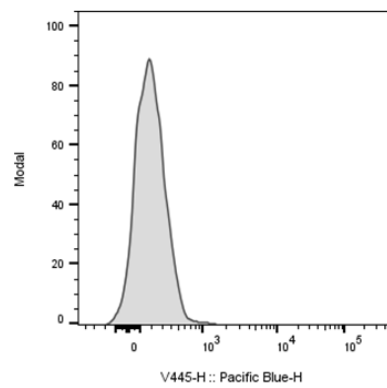
Product Details

Clone: MOPC-173
Application: FC
Reactivity: N/A
Format: PB
Isotype: Mouse IgG2a
Antibody Type: Monoclonal
Formulation: Phosphate-buffered solution, pH 7.2, containing 0.09% sodium azide and 0.2% (w/v) BSA
Protein Concentration: 0.2mg/mL
Storage&Handling: The antibody solution should be stored undiluted between 2°C and 8°C, and protected from prolonged exposure to light. Do not freeze.
Recommended Usage: Use at concentrations comparable to those used for the target-specific antibody
Excitation Laser: Violet laser (405nm)
Release Date: Nov-25

Background Information

The clone of MOPC-173 antibody is mouse isotype IgG2a, k. The MOPC-21 immunoglobulin has unknown specificity. It is chosen as an isotype control after screening on a variety of resting, activated, live, and fixed mouse, rat and human tissues.

Product Data



Human PBMC were stained PB Mouse IgG2a Isotype Control clone MOPC-173 (gray histogram).