

## PE Anti-Human CD25 (IL-2R $\alpha$ ) Antibody

<b>Catalog Number:</b>	110805, 110806
<b>Size:</b>	25 tests, 100 tests
<b>Target Name:</b>	CD25, IL-2R $\alpha$ chain, Low affinity IL-2R
<b>Regulatory Status:</b>	RUO

### PRODUCT DETAILS

---

<b>Clone:</b>	BC96
<b>Application:</b>	Flow Cytometry
<b>Reactivity:</b>	Human
<b>Format:</b>	PE
<b>Isotype:</b>	Mouse IgG1
<b>Antibody Type:</b>	Monoclonal
<b>Formulation:</b>	Phosphate-buffered solution, pH 7.2, containing 0.09% sodium azide and 0.2% (w/v) BSA
<b>Protein Concentration:</b>	Supplied at a lot-specific concentration.
<b>Storage&amp;Handling:</b>	The antibody solution should be stored undiluted between 2°C and 8°C, and protected from prolonged exposure to light. Do not freeze.
<b>Recommended Usage:</b>	For flow cytometric staining, it is recommended to use 5 $\mu$ L of this reagent per 0.5-1.0 million cells in a 100 $\mu$ L volume. Optimal reagent performance should be determined by titration for each specific application. PE has an excitation max at 565 nm and an emission max at 575 nm.
<b>Excitation Laser:</b>	Blue Laser (488 nm) Green/Yellow laser (532/561nm)
<b>Isotype Control:</b>	301407

### BACKGROUND INFORMATION

---

CD25, also known as the interleukin-2 receptor alpha chain (IL-2R $\alpha$ ), is a transmembrane glycoprotein that plays a central role in regulating immune responses. It functions as part of the interleukin-2 (IL-2) receptor complex, which is essential for T cell proliferation, survival, and differentiation. CD25 itself has low affinity for IL-2 when expressed alone, but when combined with IL-2 receptor beta (CD122) and the common gamma chain (CD132), it forms the high-affinity IL-2 receptor complex capable of effective signal transduction.

Structurally, CD25 is a single-pass type I membrane protein composed of an extracellular domain of approximately 219 amino acids responsible for IL-2 binding, a hydrophobic transmembrane segment, and a short cytoplasmic tail that lacks intrinsic signaling domains. The extracellular region is heavily glycosylated, which stabilizes its conformation and facilitates ligand interaction. Because the alpha chain alone is not signaling-competent, it acts primarily to increase the receptor complex's affinity for IL-2 and to expand the range of cells responsive to low cytokine concentrations. CD25's main ligand, IL-2, is a cytokine crucial for T lymphocyte expansion and immune tolerance. Engagement of IL-2 with the high-affinity receptor triggers the JAK-STAT signaling

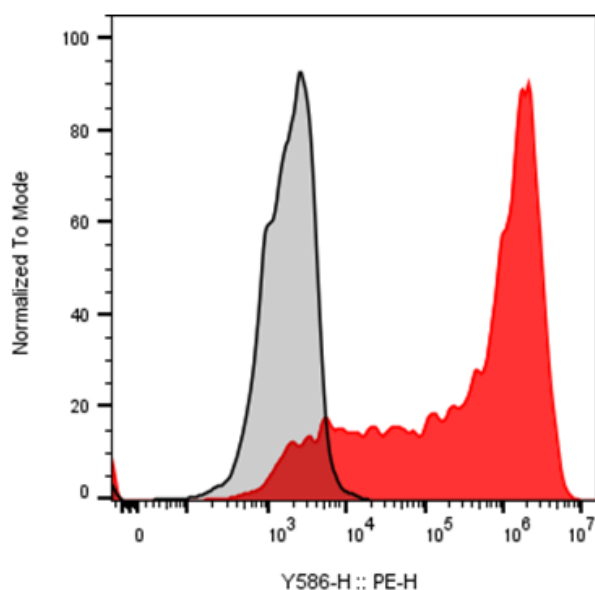
pathway, leading to cell proliferation, differentiation, and regulatory T cell (Treg) function. CD25 is constitutively expressed on Tregs and upregulated on activated CD4+ and CD8+ T cells, making it a marker of immune activation as well as immune regulation.

Aberrant CD25 expression or IL-2 signaling contributes to immune dysregulation and disease. In autoimmune disorders such as multiple sclerosis and type 1 diabetes, alterations in the IL-2/CD25 axis impair Treg function and tolerance mechanisms. Elevated CD25 expression is also found in certain malignancies, particularly adult T-cell leukemia/lymphoma and Hodgkin lymphoma, where it may serve as a biomarker of malignant proliferation. Moreover, soluble CD25, released from cell surfaces, can act as a decoy receptor, modulating IL-2 availability and contributing to immune suppression in cancer and chronic inflammation.

Therapeutically, CD25 is a prominent target for immune modulation. Monoclonal antibodies such as basiliximab and daclizumab have been developed to block IL-2 binding, preventing T cell activation and mitigating graft rejection in organ transplantation. Conversely, IL-2 or CD25-targeted therapies that enhance regulatory T cell function are being explored to treat autoimmune diseases and promote immune tolerance. Thus, CD25 remains a critical immunological node, balancing activation and regulation within the immune system.

## PRODUCT DATA

---



Anti-human CD3 and Anti-Human CD28 stimulated human peripheral blood lymphocytes was stained with PE Anti-Human CD25 clone BC96 (color-filled histogram) or an isotype control (gray histogram).

This product is supplied subject to the terms and conditions at [www.innocyto.com/web/terms.php](http://www.innocyto.com/web/terms.php) and may only be used as provided in the stated terms. Products are for Research Use Only.