

## Technical Data Sheet

### FITC Anti-Human CD38

**Catalog Number:** 101011, 101012

**Size:** 25 tests, 100 tests

**Target Name:** CD38, gp45, Cyclic ADP-ribose hydrolase 1, T10, ADP-ribosyl cyclase

**Regulatory Status:** RUO

#### Product Details

---

**Clone:** HB-7

**Application:** FC

**Reactivity:** Human

**Format:** FITC

**Isotype:** Mouse IgG1

**Antibody Type:** Monoclonal

**Formulation:** Phosphate-buffered solution, pH 7.2, containing 0.09% sodium azide and 0.2% (w/v) BSA

**Protein Concentration:** Supplied at a lot-specific concentration.

**Storage&Handling:** The antibody solution should be stored undiluted between 2°C and 8°C, and protected from prolonged exposure to light. Do not freeze.

**Recommended Usage:** For flow cytometric staining, it is recommended to use 5 µL of this reagent per 0.5-1.0 million cells in a 100 µL volume. Optimal reagent performance should be determined by titration for each specific application.

**Excitation Laser:** Blue Laser (488 nm)

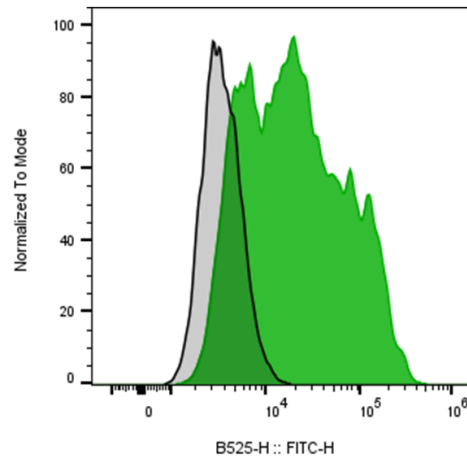
#### Background Information

---

CD38 (ADP-ribosyl cyclase 1) is a Type II membrane protein involved in calcium signaling through the conversion of NAD(P)<sup>+</sup> into cADPR, NAADP<sup>+</sup>, and ADP-ribose. It is broadly expressed in immune cells and various tissues, and is linked to immune regulation, cancer, and metabolic disorders. CD38 also serves as a prognostic marker in leukemia.

#### Product Data

---



Human peripheral blood lymphocytes stained with either FITC Anti-Human CD38 Clone HB-7 (color-filled histogram) or an isotype control (gray histogram).