

Technical Data Sheet

FITC Anti-Human CD279

Catalog Number: 101411, 101412
Size: 25 tests, 100 tests
Target Name: CD279, PD1, PD-1
Regulatory Status: RUO

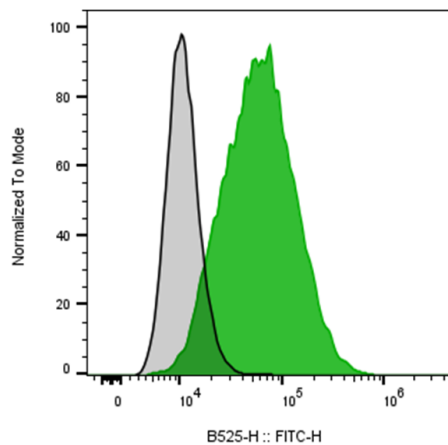
Product Details

Clone: 279AM1
Application: FC
Reactivity: Human
Format: FITC
Isotype: Mouse IgG1
Antibody Type: Monoclonal
Formulation: Phosphate-buffered solution, pH 7.2, containing 0.09% sodium azide and 0.2% (w/v) BSA
Protein Concentration: Supplied at a lot-specific concentration.
Storage&Handling: The antibody solution should be stored undiluted between 2°C and 8°C, and protected from prolonged exposure to light. Do not freeze.
Recommended Usage: For flow cytometric staining, it is recommended to use 5 uL of this reagent per 0.5-1.0 million cells in a 100 µL volume. Optimal reagent performance should be determined by titration for each specific application.
Excitation Laser: Blue Laser (488 nm)

Background Information

CD279, also known as Programmed cell death 1 (PD-1), cell surface receptor which binds to PD-L1 and PD-L2 ligands; functions as immune checkpoint with important role in down regulating immune system by preventing T-cell activation. Targeted by Nivolumab, Pembrolizumab and other monoclonal antibodies in a new class of cancer drugs. CD279 is expressed predominantly on activated T cells, B cells, and myeloid cells. The interaction with CD279 ligands results in inhibition of T cell proliferation and cytokine secretion.

Product Data



Human peripheral blood lymphocytes stimulated with plate-coated anti-Human CD3 and CD28 for 3 days was stained with FITC Anti-Human CD279 clone 279AM1 (color-filled histogram) or an isotype control (gray histogram). Cells were treated with Fc block prior to the antibody staining.