

Technical Data Sheet

APC Anti-Human CD2

Catalog Number: 109909, 109910

Size: 25 tests, 100 tests

Target Name: CD2, LFA-2, SRBC-R

Regulatory Status: RUO

Product Details

Clone: OKT11

Application: FC

Reactivity: Human

Format: APC

Isotype: Mouse IgG1

Antibody Type: Monoclonal

Formulation: Phosphate-buffered solution, pH 7.2, containing 0.09% sodium azide and 0.2% (w/v) BSA

Protein Concentration: Supplied at a lot-specific concentration.

Storage&Handling: The antibody solution should be stored undiluted between 2°C and 8°C, and protected from prolonged exposure to light. Do not freeze.

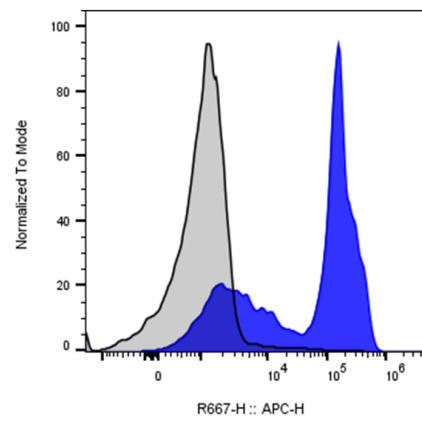
Recommended Usage: For flow cytometric staining, it is recommended to use 5 µL of this reagent per 0.5-1.0 million cells in a 100 µL volume. Optimal reagent performance should be determined by titration for each specific application.

Excitation Laser: Red Laser (633 nm)

Background Information

CD2 is a ~45–50 kDa type I transmembrane glycoprotein and a member of the immunoglobulin superfamily. It is expressed on T lymphocytes, thymocytes, natural killer (NK) cells, and some thymic B cell subsets. CD2 is one of the earliest T-cell markers and serves as a cell surface receptor crucial for cell-cell adhesion, T-cell activation, and immune signaling.

Product Data



Human peripheral blood lymphocytes stained with either APC Anti-Human CD2 Clone OKT11 (color-filled histogram) or an isotype control (gray histogram).