

## Technical Data Sheet

### Anti-Human CD196

**Catalog Number:** 111101, 111102

**Size:** 25 ug, 100 ug

**Target Name:** CD196, CCR6, DRY-6, STRL22,CKR-L3

**Regulatory Status:** RUO

#### Product Details

---

**Clone:** 196AM1

**Application:** FC

**Reactivity:** Human

**Format:** Purified

**Isotype:** Mouse IgG1

**Antibody Type:** Monoclonal

**Formulation:** Phosphate-buffered solution, pH 7.2, containing 0.09% sodium azide

**Protein Concentration:** 0.5 mg/mL

**Storage&Handling:** The antibody solution should be stored between 2°C and 8°C

**Recommended Usage:** For flow cytometric staining, it is recommended to use less than 0.1 ug of this reagent per 0.5-1.0 million cells in a 100 µL volume. Optimal reagent performance should be determined by titration for each specific application.

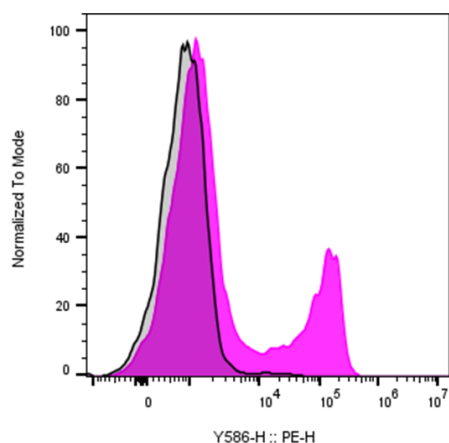
#### Background Information

---

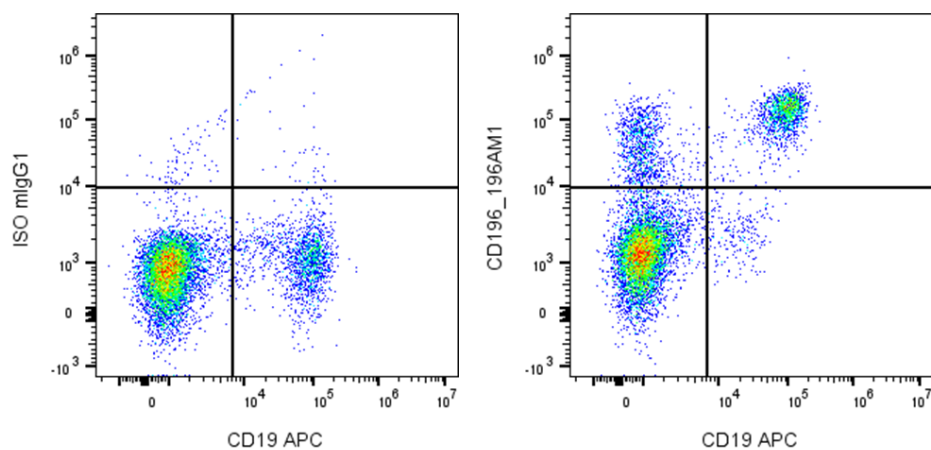
CCR6 is a seven-transmembrane chemokine receptor expressed on immature dendritic cells, B cells, and memory T cells. Its primary ligand, CCL20 (MIP-3?), regulates immune cell migration, B cell differentiation, and Th17 recruitment and is implicated in inflammatory diseases such as rheumatoid arthritis and inflammatory bowel disease.

#### Product Data

---



Human peripheral blood lymphocytes was stained with Purified Anti-Human CD196 clone 196AM1 (color-filled histogram) an isotype control (gray histogram), followed by PE anti-Mouse IgG.



Human peripheral blood lymphocytes was co-stained with APC anti-human CD19 and either purified Anti-Human CD196 clone 196AM1 (right panel) or an isotype control (left panel).