

Technical Data Sheet

iF647 Anti-Human CD196

Catalog Number: 111103, 111104

Size: 25 tests, 100 tests

Target Name: CD196, CCR6, DRY-6, STRL22,CKR-L3

Regulatory Status: RUO

Product Details

Clone: 196AM1

Application: FC

Reactivity: Human

Format: iF647

Isotype: Mouse IgG1

Antibody Type: Monoclonal

Formulation: Phosphate-buffered solution, pH 7.2, containing 0.09% sodium azide and 0.2% (w/v) BSA

Protein Concentration: Supplied at a lot-specific concentration.

Storage&Handling: The antibody solution should be stored undiluted between 2°C and 8°C, and protected from prolonged exposure to light. Do not freeze.

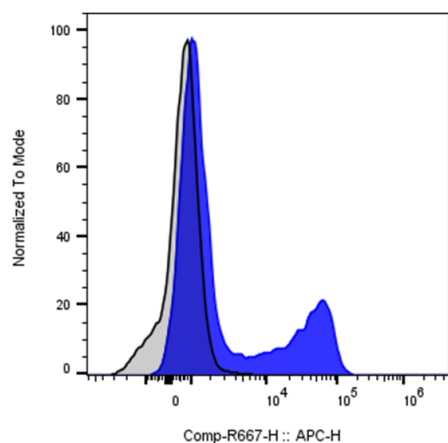
Recommended Usage: For flow cytometric staining, it is recommended to use 5 µL of this reagent per 0.5-1.0 million cells in a 100 µL volume. Optimal reagent performance should be determined by titration for each specific application.

Excitation Laser: Red Laser (633 nm)

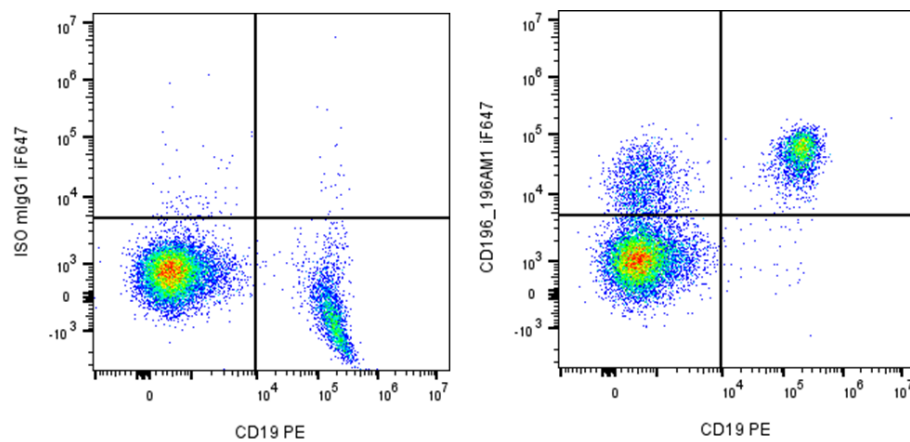
Background Information

CCR6 is a seven-transmembrane chemokine receptor expressed on immature dendritic cells, B cells, and memory T cells. Its primary ligand, CCL20 (MIP-3?), regulates immune cell migration, B cell differentiation, and Th17 recruitment and is implicated in inflammatory diseases such as rheumatoid arthritis and inflammatory bowel disease.

Product Data



Human peripheral blood lymphocytes was stained with iF647 Anti-Human CD196 clone 196AM1 (color-filled histogram) or an isotype control (gray histogram).



Human peripheral blood lymphocytes was co-stained with PE anti-human CD19 and either iF647 Anti-Human CD196 clone 196AM1 (right panel) or an isotype control (left panel).