

## Technical Data Sheet

### iF647 Anti-mouse CD28

**Catalog Number:** 203002, 203003

**Size:** 25 tests, 100 tests

**Target Name:** CD28, Tp44, T44

**Regulatory Status:** RUO

#### Product Details

---

**Clone:** 37.51

**Application:** FC

**Reactivity:** Mouse

**Format:** iF647

**Isotype:** Syrian Hamster IgG

**Antibody Type:** Monoclonal

**Formulation:** Phosphate-buffered solution, pH 7.2, containing 0.09% sodium azide and 0.2% (w/v) BSA

**Protein Concentration:** Supplied at a lot-specific concentration.

**Storage&Handling:** The antibody solution should be stored undiluted between 2°C and 8°C, and protected from prolonged exposure to light. Do not freeze.

**Recommended Usage:** For flow cytometric staining, it is recommended to use 5 µL of this reagent per 0.5-1.0 million cells in a 100 µL volume. Optimal reagent performance should be determined by titration for each specific application.

**Excitation Laser:** Red Laser (633 nm)

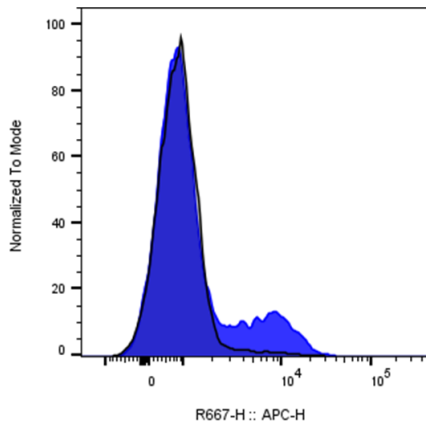
#### Background Information

---

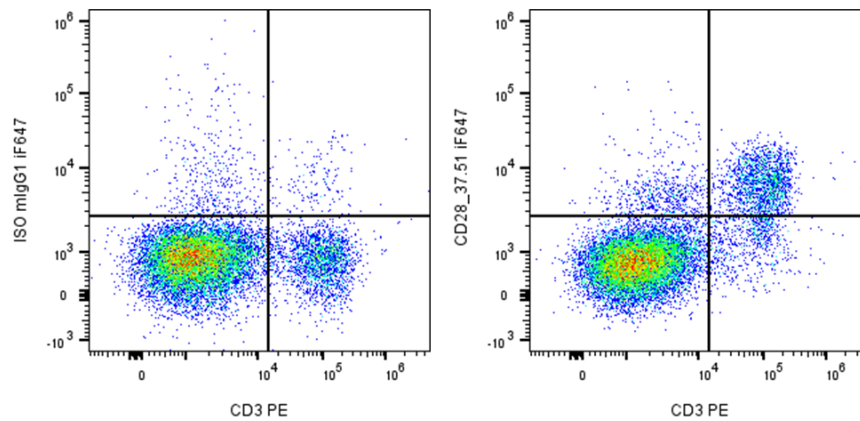
CD28 (Cluster of Differentiation 28) is one of the proteins expressed on T cells that provide co-stimulatory signals required for T cell activation and survival. T cell stimulation through CD28 in addition to the T-cell receptor (TCR) can provide a potent signal for the production of various interleukins (IL-6 in particular). CD28 is the only B7 receptor constitutively expressed on naive T cells. Association of the TCR of a naive T cell with MHC antigen complex without CD28:B7 interaction results in a T cell that is anergic.

#### Product Data

---



Mouse splenocytes were stained with iF647 Anti-Mouse CD28 clone 37.51 (color-filled histogram) or an isotype control (gray histogram) .



Mouse splenocytes were co-stained with PE anti-mouse CD3 and either iF647 Anti-Mouse CD28 clone 37.51 (right panel) or an isotype control (left panel) .