

## Technical Data Sheet

### iF647 Anti-Human CD19

**Catalog Number:** 108405, 108406  
**Size:** 25 tests, 100 tests  
**Target Name:** CD19, B4, CVID3, MGC12802  
**Regulatory Status:** RUO

#### Product Details

---

**Clone:** SJ25C1  
**Application:** FC  
**Reactivity:** Human  
**Format:** iF647  
**Isotype:** Mouse IgG1  
**Antibody Type:** Monoclonal  
**Formulation:** Phosphate-buffered solution, pH 7.2, containing 0.09% sodium azide and 0.2% (w/v) BSA  
**Protein Concentration:** Supplied at a lot-specific concentration.  
**Storage and Handling:** The antibody solution should be stored undiluted between 2°C and 8°C, and protected from prolonged exposure to light. Do not freeze.  
**Recommended Usage:** For flow cytometric staining, it is recommended to use 5 µL of this reagent per 0.5-1.0 million cells in a 100 µL volume. Optimal reagent performance should be determined by titration for each specific application.  
**Excitation Laser:** Red Laser (633 nm)

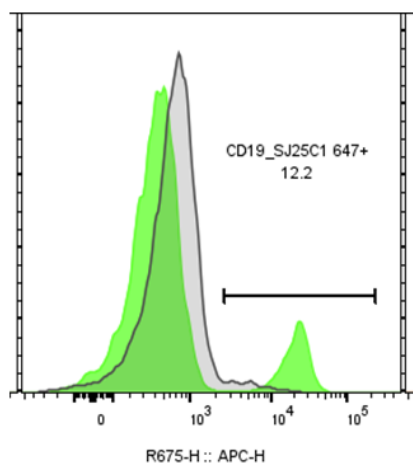
#### Background Information

---

CD19 is a 95 kD type I transmembrane glycoprotein also known as B4. It is a member of the immunoglobulin superfamily expressed on B-cells (from pro-B to blastoid B cells, absent on plasma cells) and follicular dendritic cells. CD19 is involved in B cell development, activation, and differentiation. CD19 forms a complex with CD21 (CR2) and CD81 (TAPA-1), and functions as a BCR co-receptor.

#### Product Data

---



Human peripheral blood lymphocytes stained either with iF647 anti-human CD19 clone SJ25C1 (green histogram) or an isotype control (gray histogram).