

iF647Anti-Mouse NK-1.1 Antibody

Catalog Number:	203803, 203804
Size:	25 tests, 100 tests
Target Name:	NK-1.1, CD161, NKR-P1C, NKR-P1B, Ly-55
Regulatory Status:	RUO

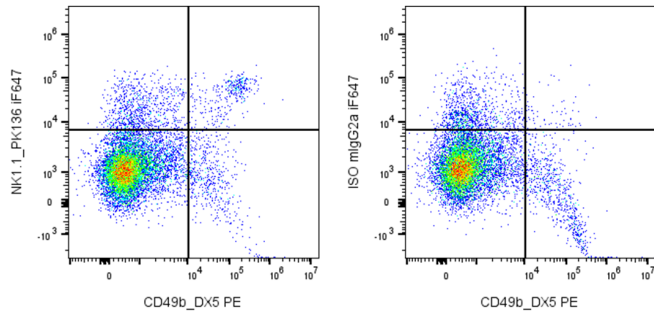
PRODUCT DETAILS

Clone:	PK136
Application:	Flow Cytometry
Reactivity:	Mouse
Format:	iF647
Isotype:	Mouse IgG2a
Antibody Type:	Monoclonal
Formulation:	Phosphate-buffered solution, pH 7.2, containing 0.09% sodium azide and 0.2% (w/v) BSA
Protein Concentration:	Supplied at a lot-specific concentration.
Storage&Handling:	The antibody solution should be stored undiluted between 2°C and 8°C, and protected from prolonged exposure to light. Do not freeze.
Recommended Usage:	For flow cytometric staining, it is recommended to use 5 uL of this reagent per 0.5-1.0 million cells in a 100 µL volume. Optimal reagent performance should be determined by titration for each specific application. iF647 has an excitation max at 656 nm and an emission max at 670 nm.
Excitation Laser:	Red Laser (633 nm)
Isotype Control:	301511

BACKGROUND INFORMATION

NK-1.1, also known as CD161b/CD161c or Ly-55, is a type II transmembrane C-type lectin receptor encoded by the Klrb1 (NKR-P1) gene family in mice. It is predominantly expressed on natural killer (NK) cells and a subset of invariant NKT cells in selected mouse strains, including C57BL/6, FVB/N, and NZB. The activating isoform NKR-P1C lacks an inhibitory motif and promotes NK cell cytotoxicity, IFN- γ production, and tumor cell lysis. NK-1.1 expression correlates with effective immune surveillance and graft rejection, making it a widely used marker for identifying and studying murine NK and NKT cell populations.

PRODUCT DATA



Mouse splenocytes were stained with PE anti-Mouse CD49d and either iF647 anti-NK1.1 antibody clone PK136 (left panel) or an isotype control (right panel).

This product is supplied subject to the terms and conditions at www.innocyto.com/web/terms.php and may only be used as provided in the stated terms. Products are for Research Use Only.